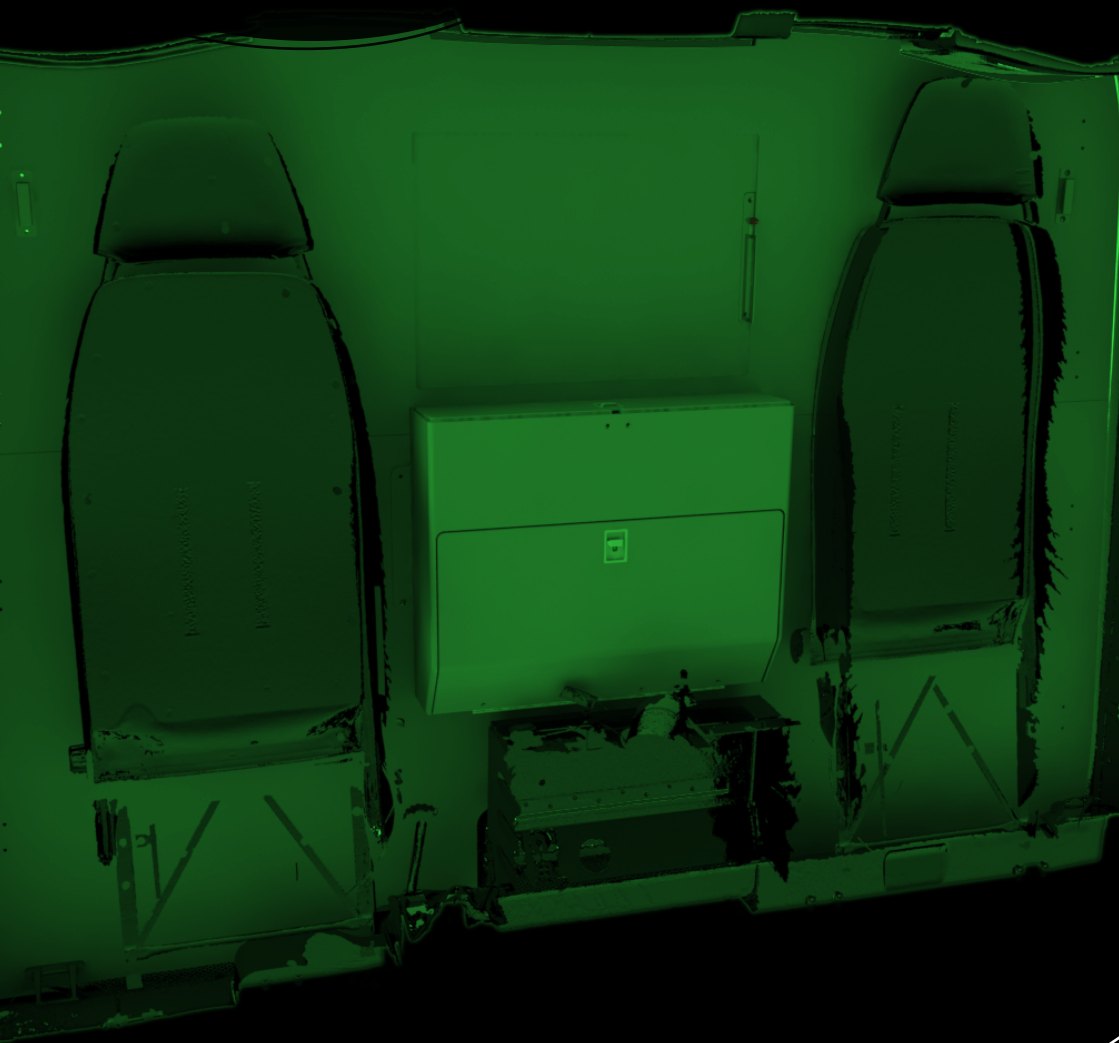


AW139 Divider wall NVG Compatible



Divider wall

AgustaWestland AW139

The Divider separates the cockpit area from the passenger compartment. It can be customized according to your operation requirements. The wall is made of a composite structure consisting of carbon fiber and honeycomb core. The design features a removable upper section to facilitate maintenance access.

Features

Customizable Design

The design can be customized according to the needs with coat hooks, cargo track for suspension of e.g. medical equipment.

NVG Compatibility

The material and edge sealant are engineered to block all light transmission, ensuring safe and effective operation under NVIS conditions.

Removable Upper Section

Designed to facilitate swift and easy maintenance operations, allowing quick access when needed.

Sliding Hatch

Physical access between the Cockpit and Cabin is possible through the sliding Hatch.



Cockpit Side



Cargo Track



Coat Hanger



Storage Solutions

Storage Box

A storage box can be included on the divider's cockpit side for your loose items.

Foam Inlays

Custom foam inlays for the top compartment can be provided for an easily accessible packaging solution for your equipment (e.g. NVG equipment).

Tilt-out

The tilt-out compartment can be used for your operator handbooks.



About BAM

Aviation Services

Bromma Air Maintenance AB is a leading aviation organization offering a diverse range of services, including:

- Part-145 Approved MRO Services
- Avionics
- Spare Parts Sales
- Part-21 Design & Production
- Ground Support
- Flight Inspections
- Aircraft Sales through Bromma Air Sales AB

Your Trusted Partner

BAM is stationed at Bromma Airport, Stockholm, Sweden, and undertakes projects worldwide. Welcome to one of Northern Europe's largest and most reliable aviation partners. Contact us to learn how we can support your aviation operations.



Bromma Air Maintenance AB
doa@bam.aero
+46 8 566 190 30
www.bam.aero

